

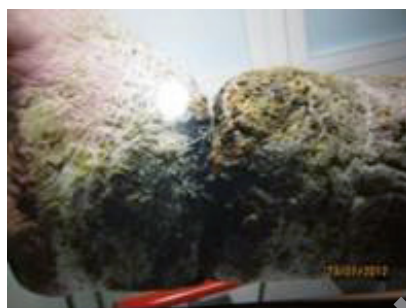
Granulox® User Guidance

1. Which type of wounds can be treated with Granulox®?

Wound type	Granulox®	
	Yes	No
Leg ulcer	●	
Foot ulcer	●	
Pressure ulcer	●	
Secondary healing of surgical wounds	●	

Legend:	
●	Recommended
✘	Not recommended
👤	YES, but consult expert
👤	NO, consult expert

2. Debridement (wound bed preparation prior to Granulox® application)?



Debridement & cleansing



Wound condition	Appropriate wound bed preparation (Debridement and/or cleansing)	Granulox® Yes No
Infection, Colonisation	Mandatory	●
Slough		
Fibrin		
Biofilm		
Necrosis		
Exudation	●	
Cavity	●	
Avital tissue	✘	
	Reconsideration after appropriate surgical treatment	

3. What type of rinsing?

Rinsing/antimicrobial treatment	Granulox®	
	Leave on*	Rinse off**
Solution / gel / ointment		
Chlorhexidine		●
Electrolyzed water (e.g. Granudacyn®)	●	
Local antibiotic	👤	👤
Octenidin		●
Polyhexanid (PHMB)	●	
PVP-iodine		●
Ringer	●	
Sodium chloride	●	
Water	●	

* Leave on = Irrigation may remain in the wound when Granulox® is applied

** Rinse off = Must be removed by thoroughly flushing the wound prior to Granulox® application

4. What type of dressing?

Dressing	Granulox®	
	Yes	No
Alginate	●	
Collagen	👤	
Film dressing (PU film) non-occlusive	●	
Film dressing (PU film) occlusive		✘
Foam dressing (hydropolymer)	●	
Gauze	●	
Hydrocolloid		✘
Hydrofiber	●	
Hydrogel	●	
Superabsorbent polymer	●	

● All semi permeable or permeable dressing are compatible

✘ Avoid occlusive dressing

5. Compatible with other therapies the patient receives?

Therapy	Granulox®	
	Yes	No
Chemo	●	
Compression	●	
HBOT	●	
Local oxygen (TOT, TCOT)	●	
NPWT***	👤	
Radiation	●	
Skin graft	●	
Systemic antibiotic	●	

*** Apply before and after NPWT (not during the treatment)

6. What healing phases?

Healing phase	Granulox®	
	Yes	No
Inflammation	●	
Granulation	●	
Epithelization	●	
Remodelling		✘

After wound bed preparation until wound is closed

Find out more at www.molnlycke.com

Mölnlycke Health Care AB, Box 13080, Gamlestadsvägen 3C, SE-402 52 Göteborg, Sweden. Phone + 46 31 722 30 00.
The Mölnlycke, Granulox and Granudacyn trademarks, names and logos are registered globally to one or more of the Mölnlycke Health Care group of companies. © 2019 Mölnlycke Health Care. All rights reserved. HQIM000XXX



Mölnlycke®