

Stays on

Uniquely conforms



Mepilex[®] Border Flex

A unique combination of Flex Technology and Safetac[®]



Wounds need to heal. Patients need care. Nurses need time. Budgets are tight. The challenge is finding a dressing that stays on as long as it is needed. Without compromise.

Mepilex® Border Flex combines innovative Flex Technology with our proven Safetac® technology to create a dressing that stays on and is still gentle.

Designed to conform and stay on

The story behind Flex Technology

Caring for patients with wounds can be difficult. Balancing efficient wound healing with patient's needs used to involve compromise. Our new proprietary Flex Technology offers a win-win solution for both patients and care givers: creating a dressing that moves with the patient, stays on and helps improve their quality of life. Whether it's leaving the dressing on in the shower, or simply forgetting it's there altogether, Flex Technology's got it covered.

Four steps to smart exudate management. Giving you the confidence to leave it on for longer.



1. Rapid absorption without swelling

The foam layer allows rapid absorption of both normal and viscous exudate^{10,11}. It is better at handling exudate than comparable dressings⁹, allowing you to leave it on for longer.



2. Exudate channelled to increase breathability

The layers of the dressing channel exudate away from the wound bed, and spread it over a wide surface area to increase moisture vapour loss. Minimal swelling¹². Maximum conformability⁸. Discrete profile.



3. Bacteria trapped away from the wound

The superabsorbent fibres in the retention layer prevent exudate containing bacteria from re-entering the wound bed, even under compression⁴, whilst the backing film prevents bacteria from getting in¹³.



4. Exudate tracked without dressing removal

The Exudate Progress Monitor allows the spread of exudate to be objectively assessed and recorded, without disturbing the wound¹⁴.

ENABLING PROTOCOL CHANGE

FROM 3 TO 7 DAYS Dressing change protocol

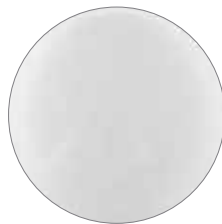
In a recent quality improvement project for patients with skin tears, Mepilex® Border Flex reduced the need for unscheduled dressing changes. Staying intact for an average of six days, it was found to have better absorption, better border adhesion and better patient comfort than the clinics previous dressing¹⁵.



FIGHTING RECONTAMINATION

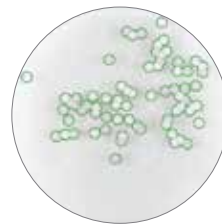
Bacteria trapping in action: Mepilex® Border Flex releases up to 22 times less bacteria than other dressings*¹⁶

*In vitro studies.



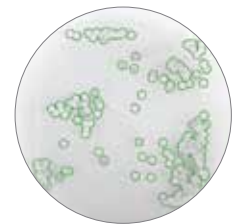
A

Mepilex® Border Flex after 1 hour of contact, number of bacterial colonies: between 0 and the low single digits^{17,18}.



B

Sorbact® Foam Gentle Border after 1 hour of contact, number of bacterial colonies: about 70 bacterial colonies¹⁷.



C

Cutimed® Siltec Sorbact® after 1 hour of contact, number of bacterial colonies: too numerous to count¹⁸.

PRODUCT PROPERTIES

Designed to conform and stay on

Innovative Flex Technology allows Mepilex® Border Flex to move in every direction, reducing skin stress, increasing comfort¹⁻³ and keeping it in place.

Smart exudate management

The 5-layer dressing Absorbs, Channels and Traps exudate and allows you to Track progress. It also keeps exudate away from the wound bed, and preventing re-entry, even under compression*⁴.

Reduced pain and trauma

Our proven Safetac® technology means less pain and trauma to the skin⁵ during dressing changes, and reduced risk of maceration than traditional (adhesive) dressings^{6,7}.

UP TO **92%**

Superior flexibility compared to other foam dressings⁸

UP TO **125%**

Greater exudate handling capacity compared to other foam dressings⁹

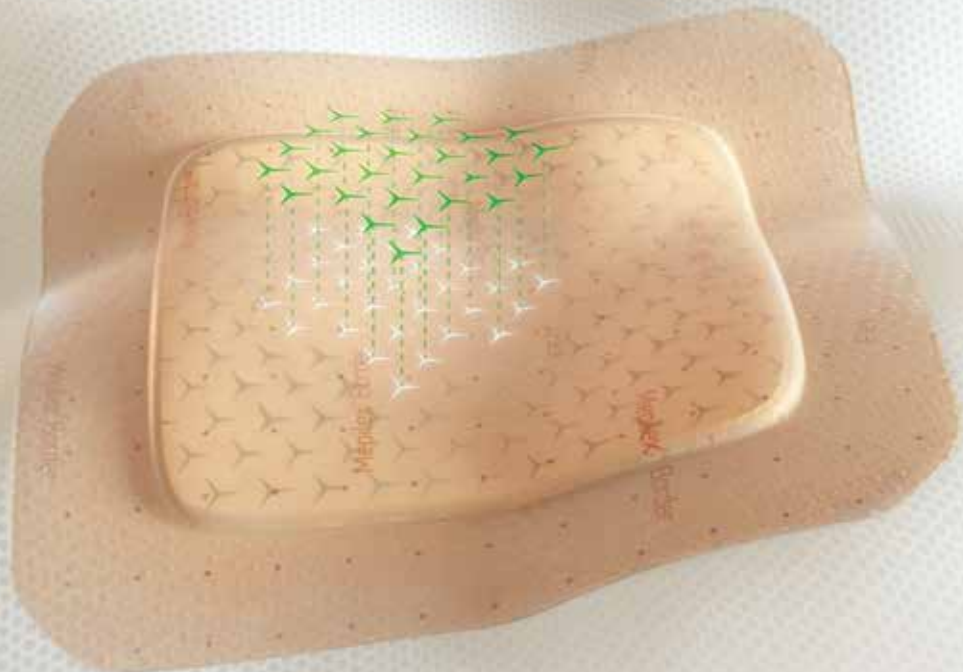
93%

Of patients preferred dressings with Safetac® over other dressings⁵

*In vitro studies.



Introducing proprietary Flex Technology:
Unique conformability
360° flexibility



Cost-effective wound care

Wound care makes up a significant portion of healthcare budgets. Only 14% of the overall cost is due to wound care products – the majority is driven by the provision of care for patients¹⁹. Unscheduled dressing changes require nurse time and resources. By reducing dressing changes, Mepilex[®] Border Flex can support undisturbed wound healing as well as a reduction in costs¹⁵.

Talk to us about how Mepilex[®] Border Flex can make a difference to your patients, team and budget.
molnlycke.com/new-mepilex-border-flex

Order number	Size (cm)	Size (inch)	Dressings per pack
595200	7.5 x 7.5	3 x 3	5
595300	10 x 10	4 x 4	5
595400	15 x 15	6 x 6	5
595600	15 x 20	6 x 8	5

Note: Not all order numbers are available in every country. Please contact your local Mölnlycke representative for information about order numbers available in your country.

References: 1. Mölnlycke Health Care. Mepilex[®] Border Flex – External data – FEM simulations MxB Flex vs Allevyn Life. Report no. PD-529747. Data on file. 2. Mölnlycke Health Care. FEM – Mepilex[®] Border Flex vs Optifoam gentle. Report no. PD-534569. Data on file. 3. Mölnlycke Health Care. FEM – Mepilex[®] Border Flex vs Aquacel foam. Report no. PD-534571. Data on file. 4. Mölnlycke Health Care. Mepilex[®] Border Flex-Bacteria encapsulation. Report no. PD-537072. Data on file. 5. White, R. A multinational survey of the assessment of pain when removing dressings. Wounds UK 2008;4(1):14-22. 6. Woo, K. & Bergström, C. An Open Randomised Cross-over Investigation Assessing Perceived Pain at Dressing Change Comparing A Soft Silicone Dressing, Mepilex[®] Border, with a Adhesive hydrocellular polyurethane dressing, Allevyn[®] Adhesive in Patients with chronic ulcer [Clinical Investigation Report (MXB408, Part A, Mölnlycke Health Care), 2007]. 7. Van De Loooverbosch, D., Andersson, A., Husmark, A. & Körner, V. An open randomised explorative study comparing Mepilex[®] Border with Tielle in patients with pressure ulcers according to stage II, EPUAP guidelines [Clinical Investigation Report (MPXB201), Mölnlycke Health Care, 2001]. 8. Mölnlycke Health Care. Mepilex[®] Border Flex Product Manual – Conformability PD-528870. Data on file. 9. Mölnlycke Health Care. Mepilex[®] Border Flex – Fluid handling capacity compared to Urgotul Foam Absorb Border, Aquacel Foam, Allevyn Classic Gentle Border, Allevyn Life, Optifoam Gentle, KerraFoam Gentle Border. Report no. PD-527642. Data on file. 10. Mölnlycke Health Care. Mepilex[®] Border Flex – Absorption and dispersion tests on inclined plane, viscous test solution. Report no. PD-528871. Data on file. 11. Mölnlycke Health Care. Product manual Initial abs different test solutions. Report no. PD-535352. Data on file. 12. Mölnlycke Health Care. Product Manual – Maintained dressing profile. Report no. 525458. Data on file. 13. Mölnlycke Health Care. Product Manual Mepilex[®] Border Flex – Viral penetration. Report no. PD-535090. Data on file. 14. Mölnlycke Health Care. Mepilex[®] Border Flex – Estimate of spreading area using dot pattern on backing film. Report no. PD-528872. Data on file. 15. Nelson, D. Better Outcomes for Skin Tears with New 5 Layer Bordered Foam Dressings. Poster Presentation at WOCN Annual Meeting, Philadelphia, PA, 2018. 16. Karlsson et al. Bacterial trapping of a newly developed all-in-one soft silicone foam dressing. Poster. EWMA, Krakow 2018. 17. Karlsson et al. A quantitative method for determination of bacterial trapping effect in wound dressings. Poster. EWMA, Krakow 2018. 18. Mölnlycke Health Care. Cutimed. Report no. PD-551237. Data on file. 19. Guest, J et al. The health economic burden that acute and chronic wounds impose on an average clinical commissioning group/health board in the UK. Journal of Wound Care vol 26, no 6 June 2017.

Find out more at www.molnlycke.com

Mölnlycke Health Care AB, P. O. Box 212 565, Dubai, UAE. Phone +971 4 554 7317

The Mölnlycke, Mepilex and Safetac trademarks, names and logos are registered globally to one or more of the Mölnlycke Health Care Group of Companies. ©2017 Mölnlycke Health Care AB. All rights reserved. MEAWC0038

Sorbact is a registered trademark of ABIGO Medical AB. Cutimed is a registered trademark of BSN medical. UrgoTul is registered trademark of URGO Medical AB. Aquacel is a registered trademark of ConvaTec Inc. Allevyn is a registered trademark of Smith&Nephew. Optifoam is registered trademark of Medline Industries Inc. KerraFoam is registered trademark of Crawford Healthcare Inc.