

Smart exudate management

Giving you confidence to leave the dressing on for longer and still maintain an optimal wound healing environment.



1. Rapid absorption with minimal swelling:
The foam layer allows rapid absorption of both normal and viscous exudate^{1,10} and it is better at handling exudate than comparable dressings¹¹.



2. Maximises capacity by channelling exudate:
Exudate is channelled away from the wound and over a wider area to increase moisture vapour loss and reduce swelling^{4,7}.

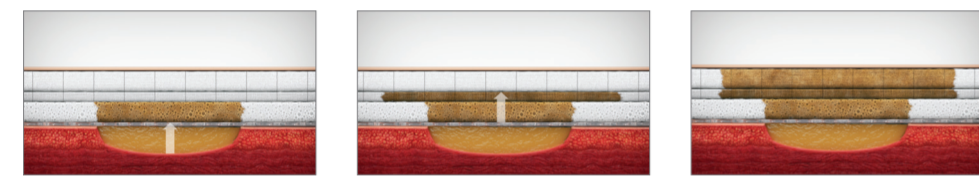


3. Traps bacteria away from the wound:
The superabsorbent fibres in the retention layer prevent exudate containing bacteria from re-entering the wound bed, even under compression⁹. Backing film prevents entry of external bacteria¹².

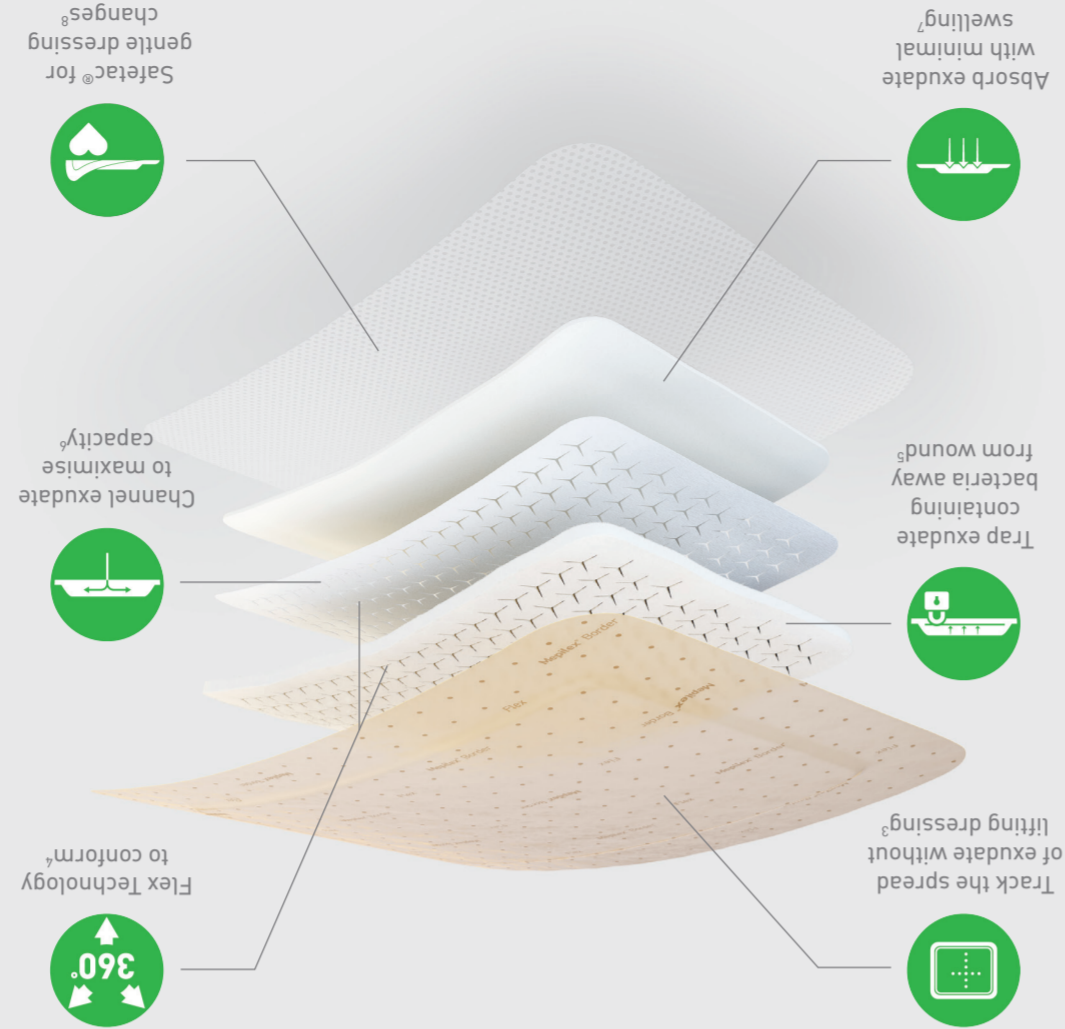


4. Tracks exudate without dressing removal:
The Exudate Progress Monitor allows the spread of exudate to be objectively assessed and recorded, without disturbing the wound².

Rapid absorption with minimal swelling and maximises capacity by channelling exudate^{6,7}:



Rapid absorption + Channelling exudate with spreading layer = Greater fluid handling capacity + Minimal swelling



Our next generation of flexible dressings are designed to stay on and uniquely conform, giving time back to nurses, cost savings back to managers and quality of life back to patients¹².

Introducing Mepilex® Border Flex

Mepilex® Border Flex is designed for a wide range of exuding wounds such as:



Mepilex® Border Flex may also be used as part of a prophylactic therapy to help **prevent skin damage**, e.g. pressure ulcers.

Square

Order number	Size (cm)	Size (inch)	Dressings per pack
595211-50	7.5 x 7.5	3 x 3	10
595311-00	10 x 10	4 x 4	10
595011-00	12.5 x 12.5	5 x 5	10
595411-00	15 x 15	6 x 6	10
595611-00	15 x 20	6 x 8	10

Note: Please contact your local Mölnlycke representative for information about order numbers available in your country.



Oval

Order number	Size (cm)	Size (inch)	Dressings per pack
583300	13 x 16	5.1 x 6.3	5
583400	15 x 19	6 x 7.5	5
583500	7.8 x 10	3.1 x 4	5



Visit molnlycke.com to find out how Mepilex® Border Flex dressings can help your patients, your team and your budgets.

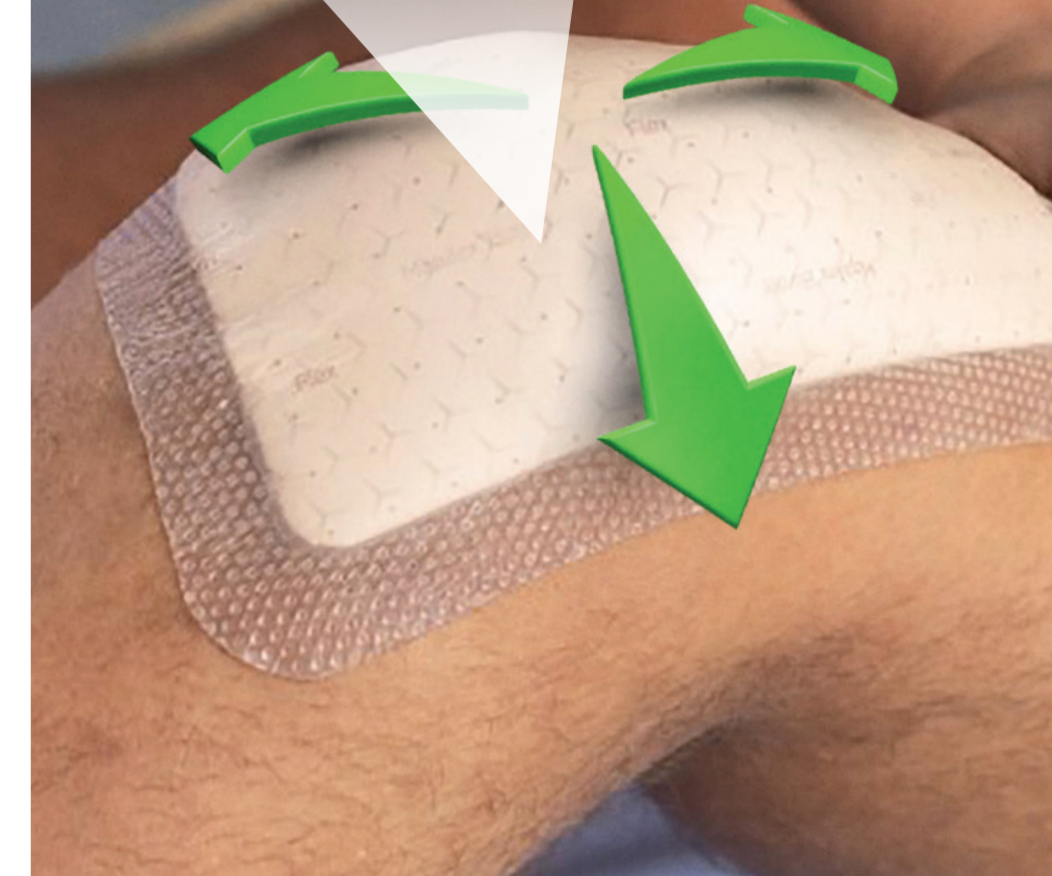
References: 1. Nelson, D. A New Bordered Foam Dressing Technology Improves Wound Outcomes and Satisfaction While Reducing Dressing Utilization in Acute Care. Poster Presentation at WOCN Annual Meeting, Nashville, 2019. 2. Tyson, L. Study First: Driving the Case for Improving Hospital Wound Care. Poster Presentation at WOCN Annual Meeting, Nashville, 2019. 3. Mölnlycke Health Care. Mepilex® Border Flex – Estimate of spreading area using dot pattern on backing film. Report no. PD-528872. Data on file. 4. Mölnlycke Health Care. Mepilex® Border Flex Product Manual – Conformability PD-528870. Data on file. 5. Mölnlycke Health Care. Mepilex® Border Flex-Bacteria encapsulation. Report no. PD-537072. Data on file. 6. Mölnlycke Health Care. Mepilex® Border Flex Product Manual – Spreading layer PD-528874. Data on file. 7. Mölnlycke Health Care. Product Manual – Maintained dressing profile. Report no. 525458. Data on file. 8. White, R. A multinational survey of the assessment of pain when removing dressings. Wounds UK 2008;4(1):14-22. 9. Mölnlycke Health Care. Mepilex® Border Flex – Absorption and dispersion tests on inclined plane, viscous test solution. Report no. PD-528871. Data on file. 10. Mölnlycke Health Care. Product manual Initial abs different test solutions. Report no. PD-535352. Data on file. 11. Mölnlycke Health Care. Mepilex® Border Flex – Fluid handling capacity compared to Urgotul Foam Absorb Border, Aquacel Foam, Allevyn Classic Gentle Border, Allevyn Life, Optifoam Gentle, KerFoam Gentle Border. Report no. PD-527642. Data on file. 12. Mölnlycke Health Care. Product Manual Mepilex® Border Flex – Viral penetration. Report no. PD-535090. Data on file. 13. Opinion Matters Professional Health Care Treatment for Wounds survey conducted June-July 2016 in UK. Data on file. 14. Woo, K. & Bergström, C. An Open Randomised Cross-over Investigation Assessing Perceived Pain at Dressing Change Comparing A Soft Silicone Dressing, Mepilex® Border, with a Adhesive hydrocolloidal polyurethane dressing, Allevyn® Adhesive in Patients with chronic ulcer (Clinical Investigation Report IMXB408, Part A, Mölnlycke Health Care, 2007). 15. Van De Looerbosch, D., Andersson, A., Husmark, A. & Körner, V. An open randomised explorative study comparing Mepilex® Border with Tulle in patients with pressure ulcers according to stage II, EPUAP guidelines (Clinical Investigation Report IMXB201, Mölnlycke Health Care, 2001). 16. Mölnlycke Health Care. Mepilex® Border Flex – Waterproofness. Report no. PD-532095. Data on file. Mölnlycke Health Care AB, P.O. Box 13080, Gamlestadsvägen 3 C, SE-402 52 Göteborg, Sweden. Phone + 46 31 722 30 00 The Mölnlycke, Mepilex and Safetac trademarks, names and logos are registered globally to one or more of the Mölnlycke Health Care Group of Companies. ©2019 Mölnlycke Health Care AB. All rights reserved. HOIM001334



Wounds need to heal. Patients need care. Nurses need time. Budgets are tight. The challenge is finding a dressing that is comfortable and stays on as long as it is needed. Without compromise.

Unique Flex Technology = 360° flexibility

Y-cuts expand to allow movement:



Mepilex® Border Flex

User guide



Stays on. Uniquely conforms



9/10 patients feel their wound impacts their quality of life¹³.

Our proven Safetac® soft silicone wound contact layer **reduces pain and damage to the skin and risk of maceration** compared with traditional (adhesive) dressings^{14,15}.

Mepilex® Border Flex is also **water resistant so your patients can shower**¹⁶. Ensure longer wear time by securing the borders prior to shower.



5.5 days
average wear time on multiple wound types¹



Pressure ulcer prevention



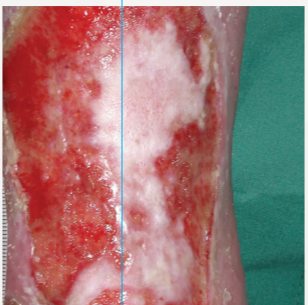
Trauma



Skin tears



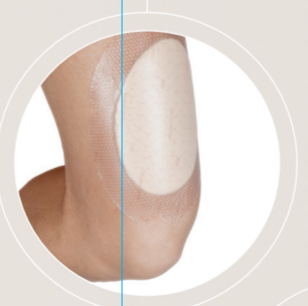
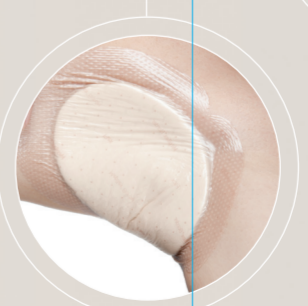
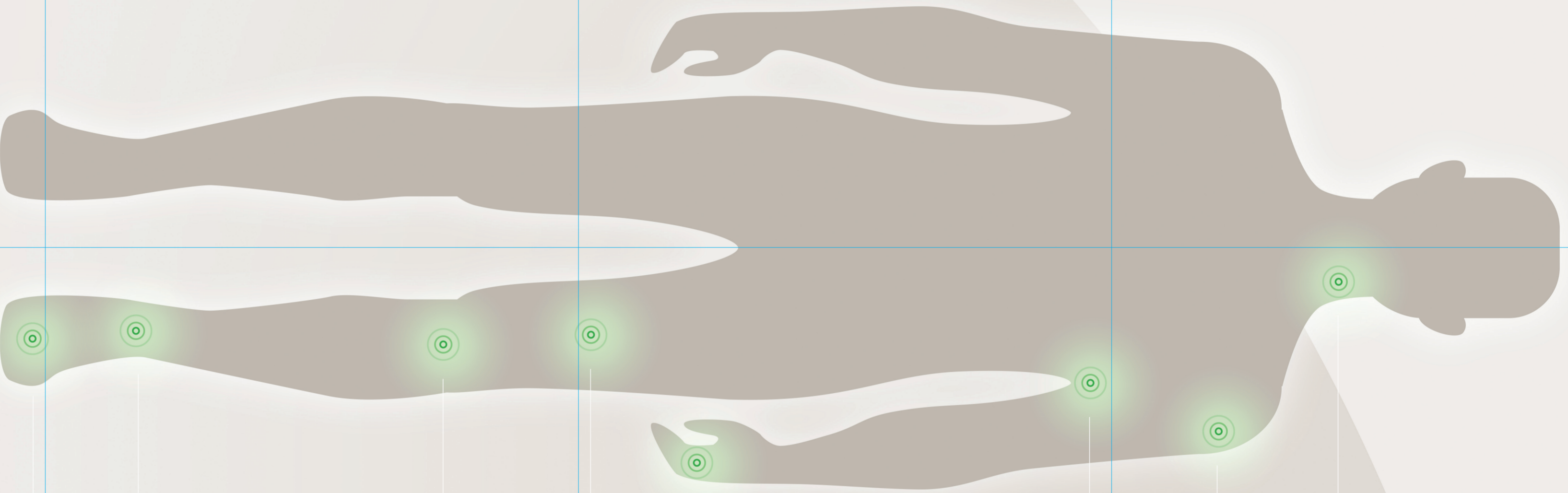
Leg ulcer



Pressure ulcer treatment



Diabetic foot ulcer



How to apply Mepilex® Border Flex



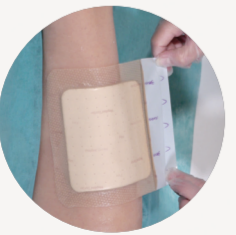
1. Remove the middle release liner.



2. Apply to wound.



3. Remove second release liner.



4. Remove third release liner.



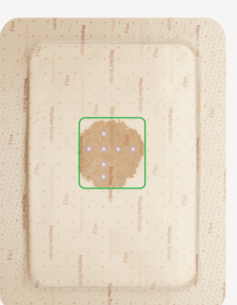
5. Smooth down the borders.

How the Exudate Progress Monitor works

The Exudate Progress Monitor gives you the confidence to leave the dressing in place for longer*.

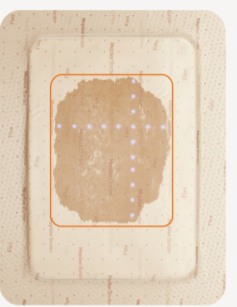


The Exudate Progress Monitor is a grid of equidistant dots.



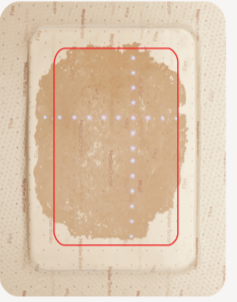
e.g. 4x4cm

As exudate spreads you can record a dot count that reflects exudate volume in the dressing.



e.g. 8x10cm

You can then refer to the recorded dot count to help monitor exudate trends.



e.g. 10x14cm

Consider dressing change when exudate is approaching the borders of the dressing*.

*Wound inspection and dressing change frequencies are driven by clinical decision and should be at the discretion of the treating clinician

Visit molnlycke.com to find out how Mepilex® Border Flex dressings can help your patients, your team and your budgets.